

# Gateway Theatre

## A Visual Guide



There are three places at which you can arrive at Gateway Theatre.



This is the main entrance of the Theatre. If you came by a car or bus, you may sometimes alight here. It can get busy and crowded before the performance starts.

This is the drop-off point.



If you come by a car or bus, you should alight here. It can get busy and crowded before the performance starts. Walk towards the main road to get to the main entrance or the passenger lifts.

This is the service lift.



From here, turn left to go to the main entrance and passenger lifts.

Turn right to get to the main entrance and passenger lifts.





This is the front of the theatre.



The main entrance is on your right. The passenger lifts are around the corner on the other end of this walkway.

The Passenger lifts are ahead, on your right



If you need to pick up your tickets, you can do this at the Box Office located at the end of this walkway.

These are the Passenger lifts.



If you are walking from the bus stop or train station, you would arrive at this lobby. From here, you can go to the Theatre Circle, as well as the other venues in the building.



Inside the lifts, you can use the map and the directory to help you find your way around the building.



It can get busy and crowded before the performance starts.

## Going for a performance in the Theatre

## Ground Floor - Stalls

These doors will bring you to the stall seats.  
'Stalls' is the name of the seated area on the first floor.



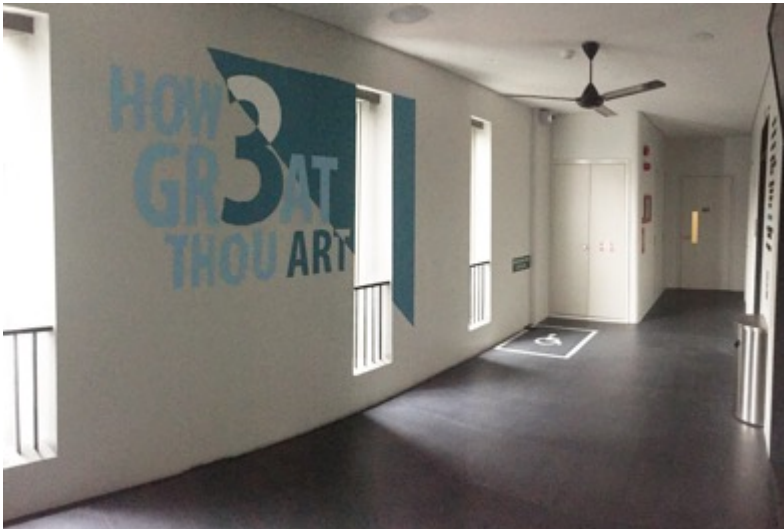
The toilets are on either side of the entrance.  
The ladies are beside Door 4 and the gents beside Door 3

This is what the Theatre looks like from the ground floor.



### **Third Floor - Circle**

Take the Passenger Lifts to the third floor  
This door will lead you to the foyer of the Theatre Circle



'Circle' is the name of the seated area on the upper tier of a theatre.



These doors will bring you to the Circle seats.



The toilets are on either side of the building.  
The ladies are in the Passenger lift lobby and the gents in the Service lift lobby.



There are nursing rooms on either side.

## Going for a performance in the Black Box

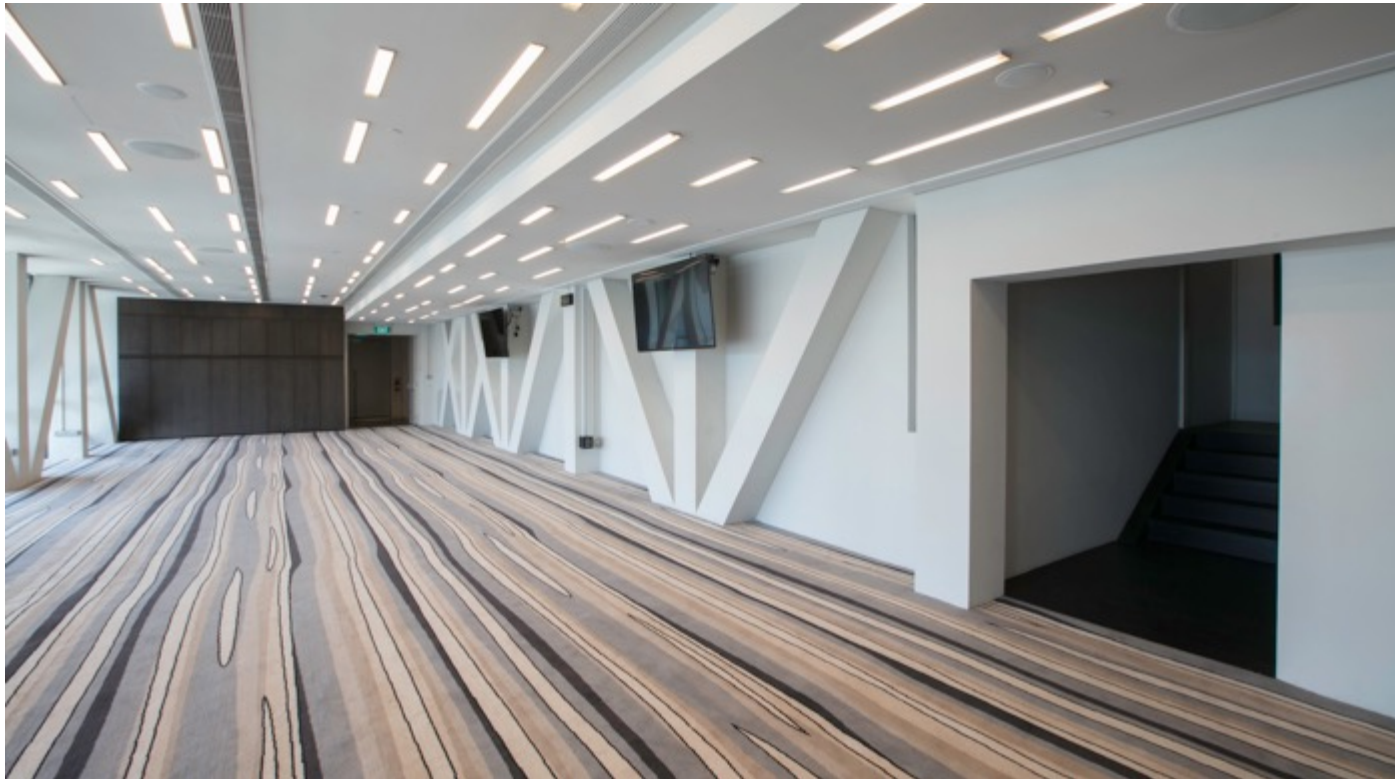
## The Gallery

Sometimes, the Gallery is used as a foyer or reception space for performances in the Black Box.



Sometimes, the Gallery is used for events and performances of its own. Take the Passenger Lifts to the Seventh floor. This door will lead you to the Gallery.

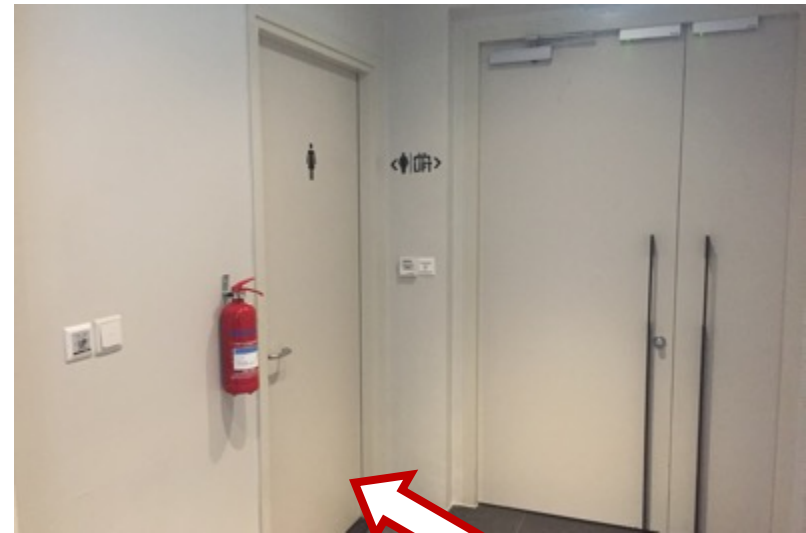
This is what the Gallery looks like.



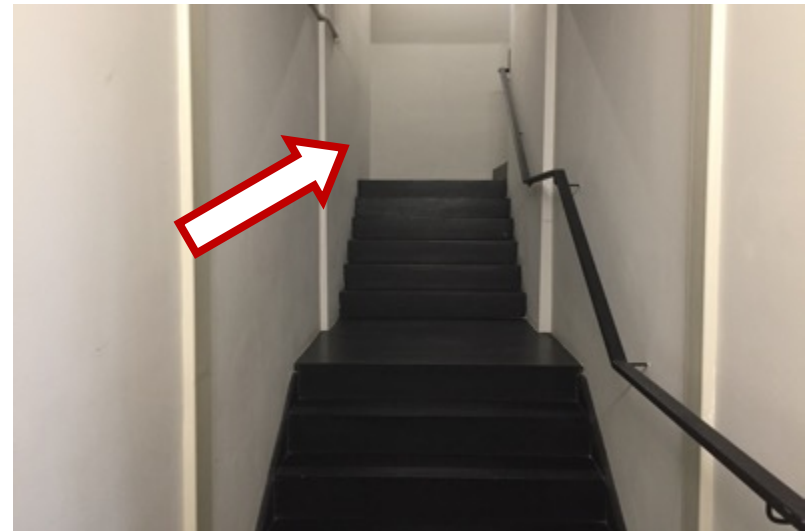
It can get busy and crowded before the performance starts.



The toilets are on either side of the building.  
The ladies are beside the door to the Passenger Lift lobby and the gents and handicapped toilet beside the door to the Service Lift lobby.



This stairway leads up to the Black Box



## **The Black Box**

If you are going straight to the Black Box instead of through the Gallery, take the Passenger Lifts to the eighth floor



This door will bring you into the Black Box

Go through the double doors and turn left or right to get to your seats.



It will be dark, but will get brighter once you get to the seating area. There aren't any toilets on this level, and the closest toilets are on level 7.

This is what the Black Box looks like.





5 minutes before the performance starts, you will hear a bell.  
This means you can go to your seats.

When the performance begins, the lights will go down and the room will get darker.

Some of our performances will have a break halfway, which is called **The Interval**.

**It usually lasts for 15 minutes but do listen out for an announcement should there be a longer interval.**

When the interval is almost over, a bell will ring which means that it is now time to go back to your seat.

When the performance ends, the audience will clap their hands, some may even stand and cheer. The lights will come back on and you can leave through the doors.

A lot of people will use the main exits and lifts which will be busy and often crowded and noisy.

Please feel free to stay in your seat until the crowd has dispersed.

## Going for an event in the Sky Garden

To get to the Sky Garden, take the lift to level 6.



This door leads to the Sky Garden.



This is the way to the Sky Garden.



The Garden and water feature are on the left, and there is a terraced seating area on the right.

This is what the Sky Garden looks like.



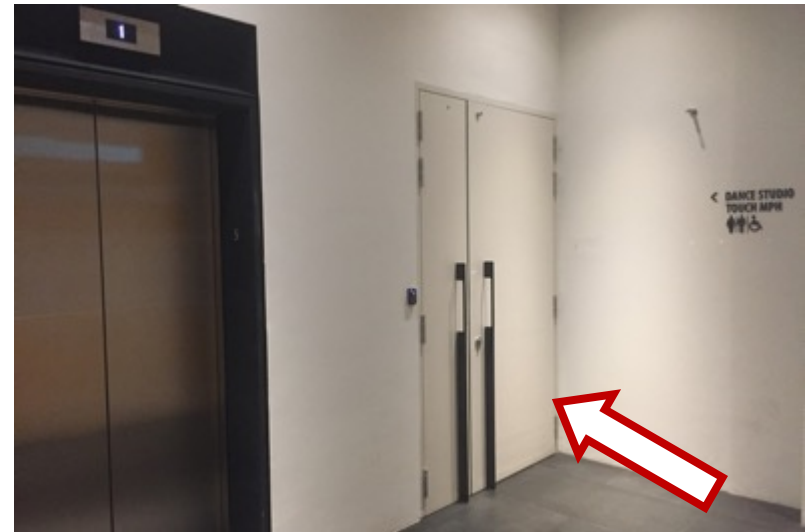
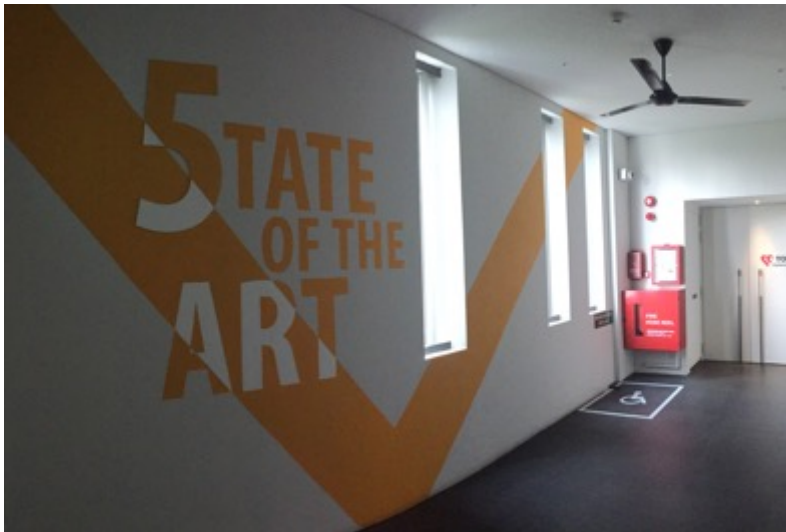
The toilets are on either side of the building.



The ladies are beside the door to the Passenger Lift lobby, and the gents and handicapped toilets are beside the door to the Service Lift lobby.

## Going for an event in the Dance Studio

To get to the Dance Studio, take the lift to level 5.



This door leads to the Dance Studio

Follow the passageway down, first turning left, then right, and it will lead you to the Dance Studio.



Enjoy the artwork along the way! It's a special 3D perspective artwork that forms an image when you stand in the right spot.

The passageway will reveal another piece of perspective artwork.



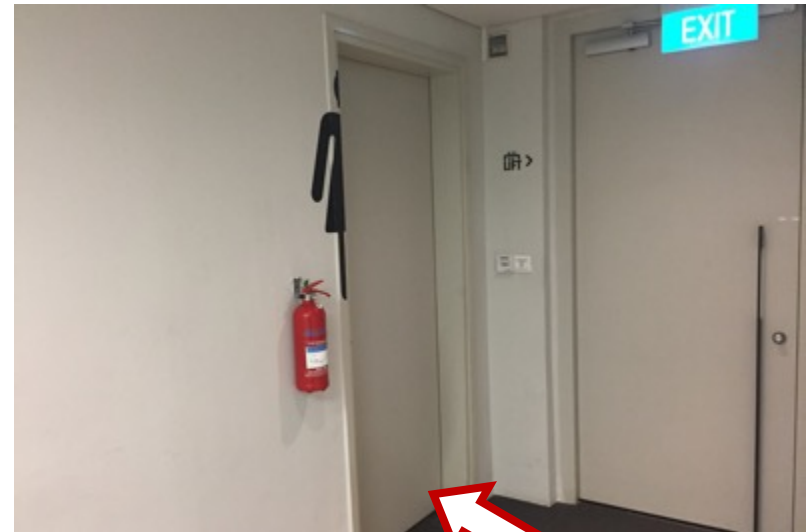
The Dance studio is on the right.



This is what the Dance Studio looks like.

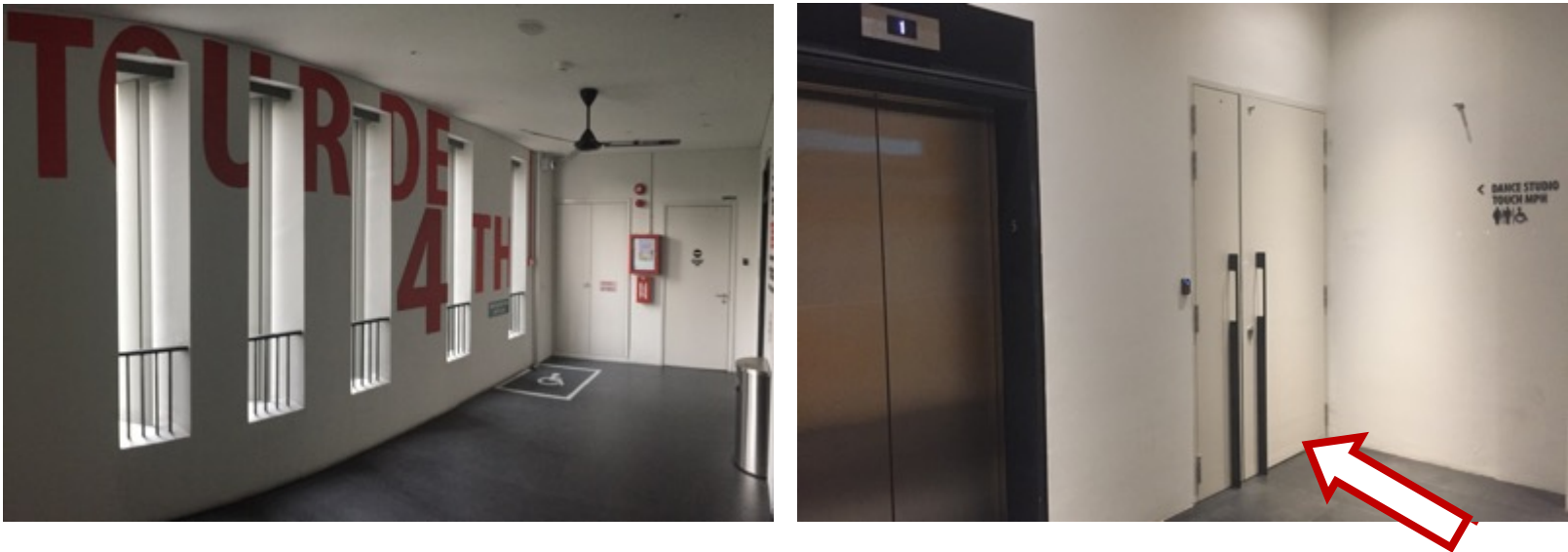


The toilets are on either side of the building.  
The ladies are beside the door to the Passenger Lift lobby and the gents and handicapped toilet beside the door to the Service Lift lobby.



## Going for an event in Studio 1

To get to Studio 1, take the lift to level 4.



This door leads to Studio 1

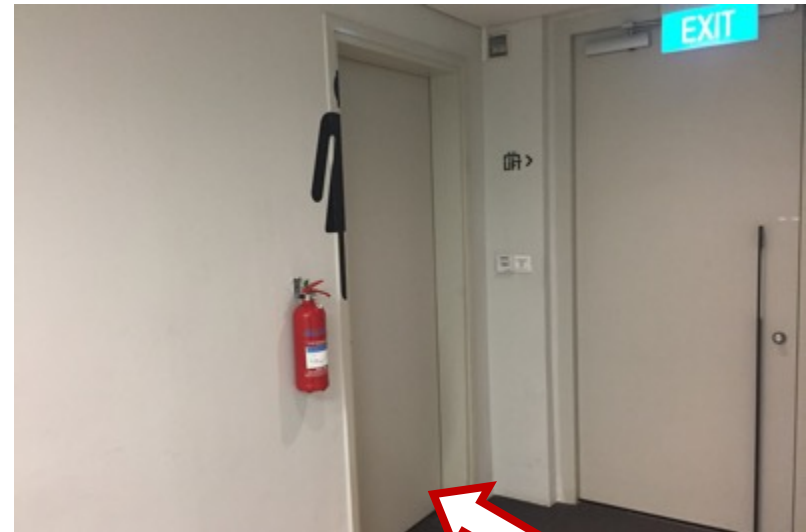
Studio 1 is in the second door on the left.



This is what Studio 1 looks like.



The toilets are on either side of the building.  
The ladies are beside the door to the Passenger Lift lobby and the gents and handicapped toilet beside the door to the Service Lift lobby.





On behalf of Gateway Theatre,  
We would like to thank you for visiting our Theatre and we hope you have a wonderful  
time.

If you would like to share your experiences with us or any areas that we could improve on,  
Please write to us at <http://theatre.gateway.sg/contact-us>

We look forward to welcoming you.